

Factual Information about UPSD Propositions #1 and #2



VIRTUAL PRESENTATION TO THE UNIVERSITY PLACE COMMUNITY

JANUARY 26 & 27, 2022



2021/22 Enrollment Data

5,590 Students (v. 5,626 last year)

- 5,418 in-person, full time
- 172 fully online (*this year only- parent request*)

Enrollment has a significant impact on all funding sources- including levies.



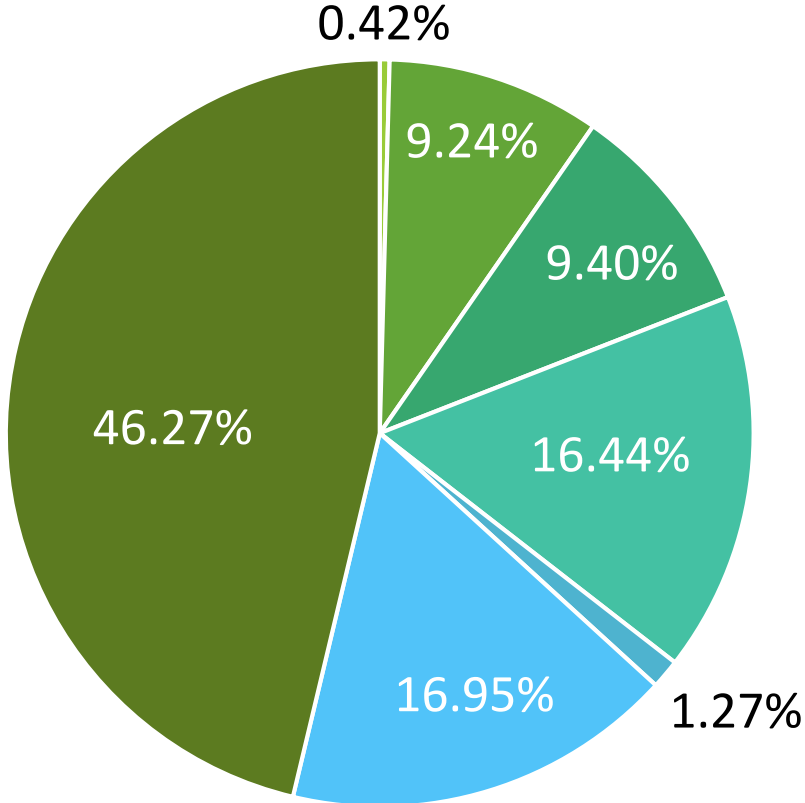
More UPSD Student Information. . .

- 35.9% meet “low income” criteria
- 10.7% qualify for special services
- 5.5% are *English Language Learners (ELL)*
- 50+ languages spoken in UPSD homes
- 6.0% are “military connected”
- 1.0% qualify as homeless



UPSD Student Demographics 2021

- American Indian/ Alaskan Native
- Asian
- Black/ African American
- Hispanic/ Latino of any race(s)
- Native Hawaiian/ Other Pacific Islander
- Two or More Races
- White

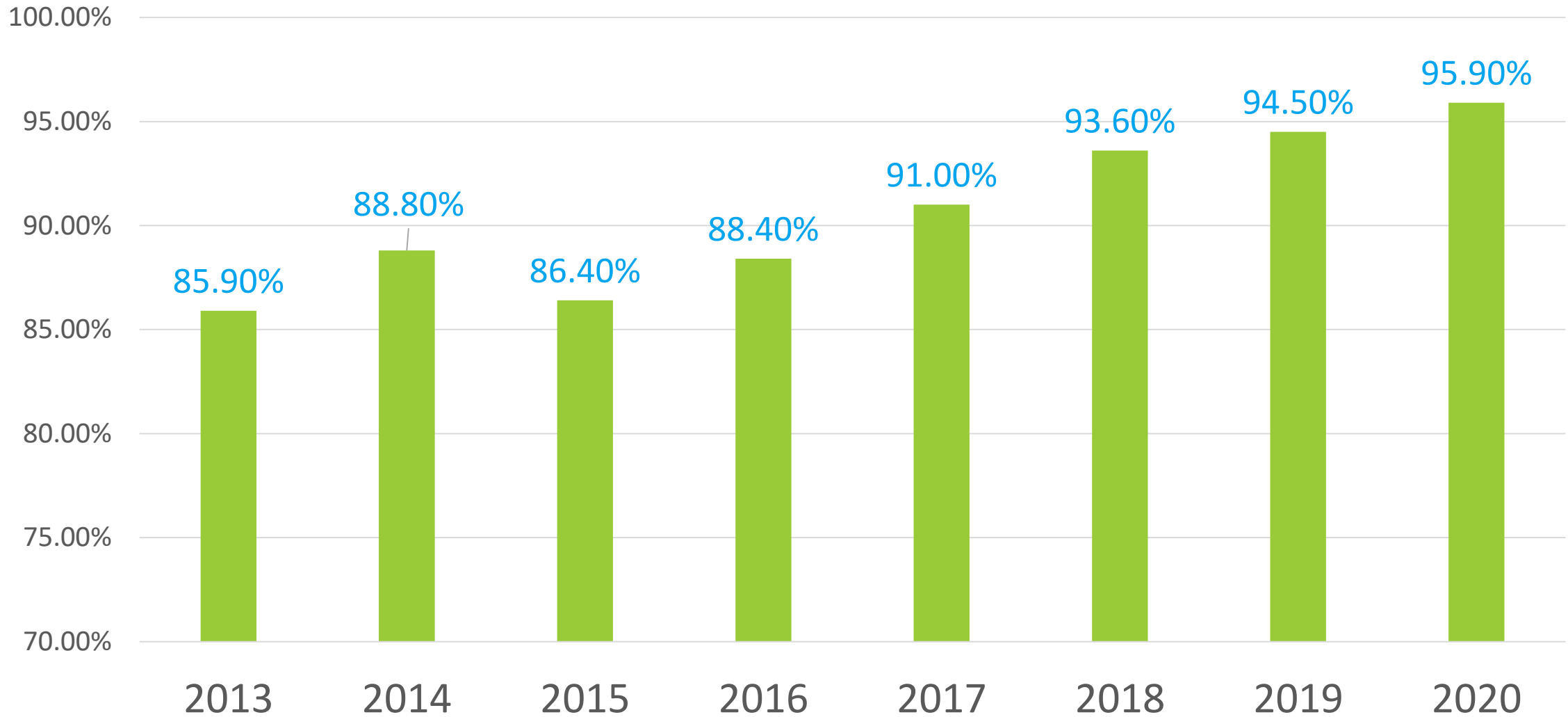




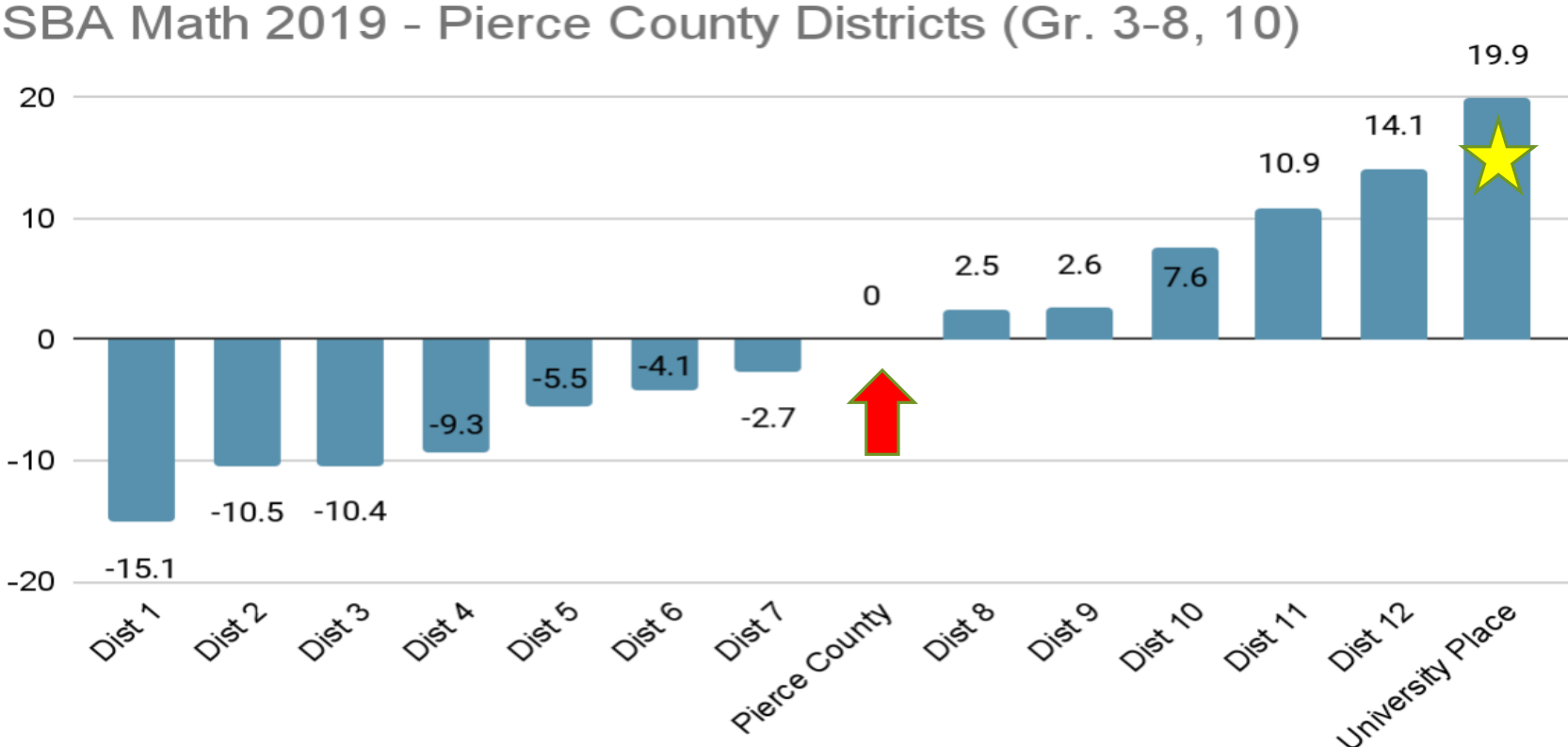
Outstanding public schools
are created with
outstanding local support

UP SCHOOLS GET OUTSTANDING RESULTS FOR KIDS...

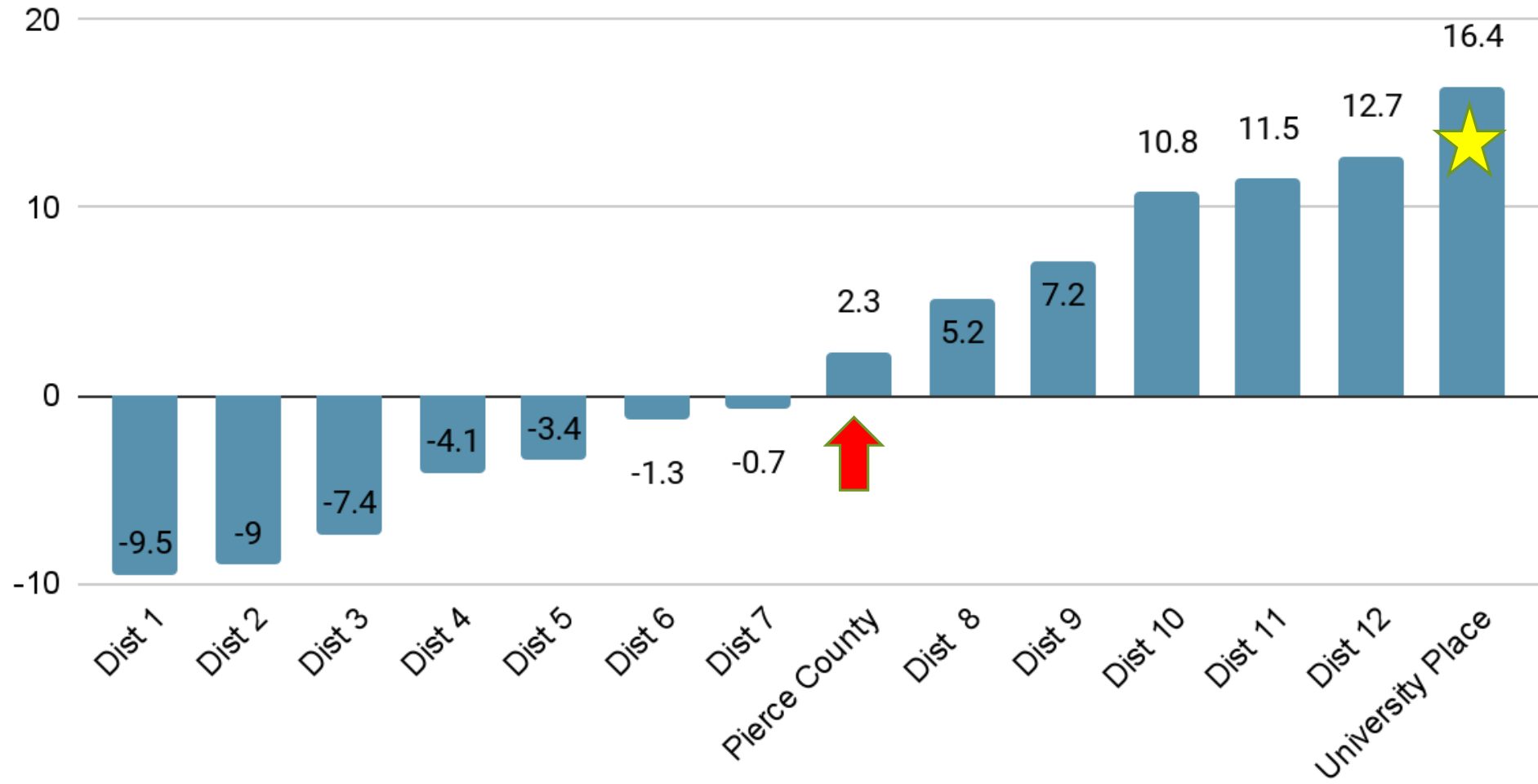
CHS 4-YR Graduation Rate 2013-2021



High Achievement in Mathematics- 2019



SBA ELA 2019 - Pierce County Districts (Gr. 3-8, 10)



AWARD WINNING SCHOOLS

Intermediate, Junior & Senior High

School	Years of Recognition for Excellence
Drum	2012, 2015, 2016 2016 National Title I Distinguished School Award 2021 #2 Middle School in Pierce County (Niche.com)
Narrows View	2015, 2016, 2019 2021 Best (#1) Middle School in Pierce County (Niche.com) 2021 Center for Ed Effectiveness Positive Outlier School (Top 2% in WA)
Curtis Jr. High	2013, 2014, 2015 2021 #4 Middle School in Pierce County (Niche.com)
Curtis Sr. High	2015 Best High School in Pierce County (#6 in WA) US News & W.R. 2021 Best High School in Pierce County (Niche.com)



AWARD WINNING SCHOOLS

Primary Schools

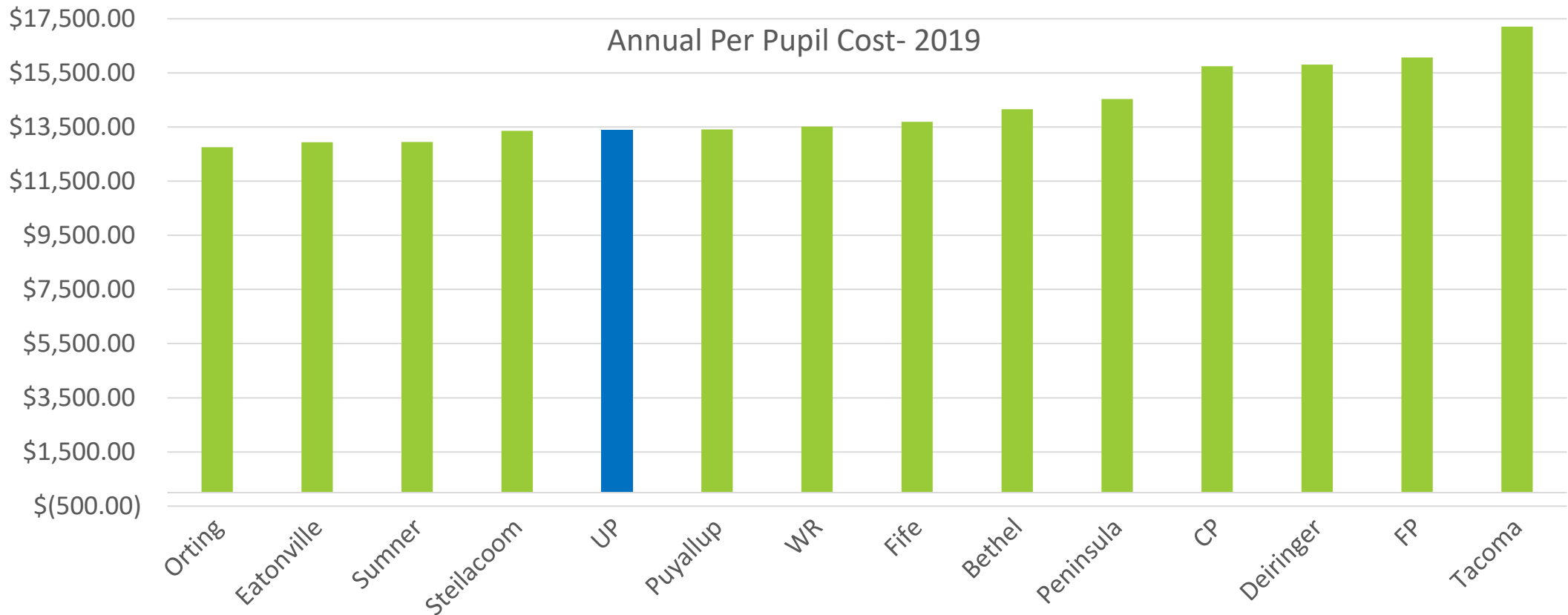
School	Years of Recognition for Excellence
Chambers	2009, 2011, 2012, 2013, 2014, 2015, 2016, 2019
Sunset	2011, 2015, 2016
Evergreen	2013, 2015, 2016
University Place (UPP)	2015, 2016 2016 WA State School of Distinction 2019 National Blue Ribbon School 2021 Best Elementary School in Pierce County (niche.com) 2021 Center for Ed Effectiveness Positive Outlier School (Top 2% in WA)



Per-Pupil Cost Comparison - 2019

Pierce County Districts- Reported by OSPI

UPSD gets excellent results at costs below those of many other districts in the state and county.

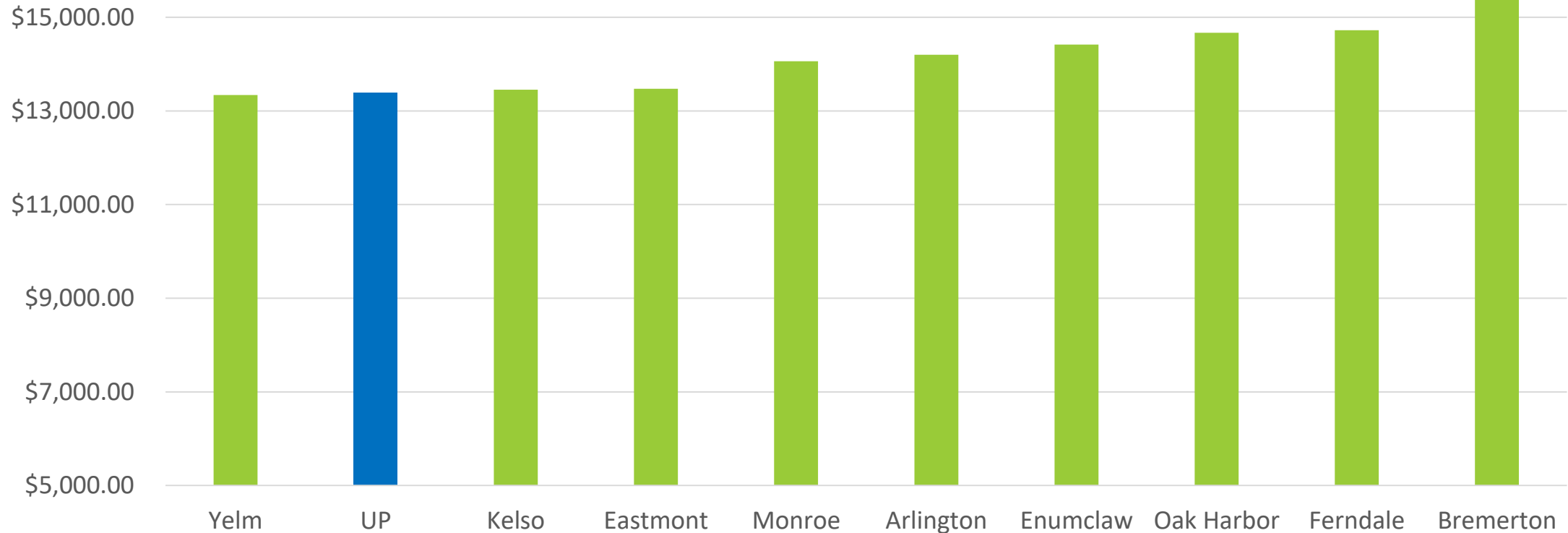


Per-Pupil Cost Comparison - 2019

Like-Size Districts - Reported by OSPI

UPSD gets excellent results at costs below those of many other districts in the state and county.

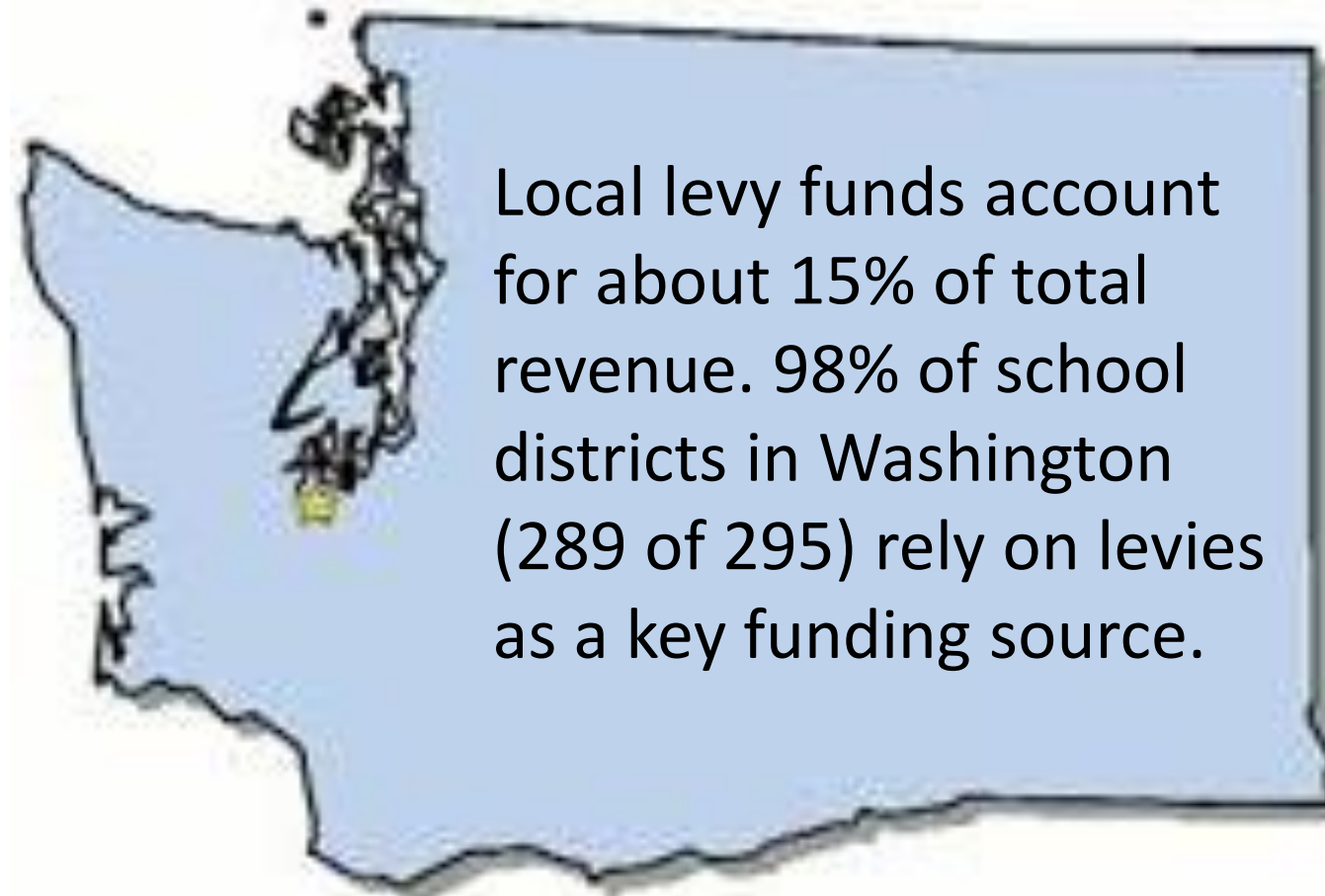
Annual Per Pupil Cost- 2019



10 Things Every Citizen Should Know About Propositions #1 and #2

LOCAL LEVY SUPPORT IS NECESSARY FOR THE DISTRICT TO
CONTINUE ITS RECORD OF EXCELLENCE.

#1 - Local school levies are *still* a common, basic funding source for schools in WA.



#2 - School levies help all kids in UPSD.

Levy dollars are used at all 8 schools to provide programs and services in grades Preschool through 12th grade.



#3 - Both Propositions 1 & 2 replace expiring levies and are not new taxes.

Voters approved both levies by large margins in 2014 & 2018.

The 2018 levies expire in 2022.

**RENEWAL
REMINDER**

#4 - Both Propositions 1 & 2 would provide funding for four more years, 2023-2026.

The two levies approved by voters in 2018 provided funding for years 2019-2022.



#5 - The Educational Programs and Operations Levy (Proposition #1) funds key programs

- Teachers & Teaching Support
- Safety & Security Personnel
- Music & Performing Arts
- Athletics & Aquatic Programs
- Counselors & Support Staff
- Nurses & Health Services
- Student Support & Summer School
- Staff Training



Determining Levy Amounts for Prop #1

Goal: Continue current programs and staffing levels and

- *Provide for Intermediate and Primary after school programs/athletics*
- *Provide for enhanced counselor support 5-12*

Key Considerations:

Anticipated cost of these programs over four years (inflation, new state requirements, increasing labor costs, etc.)

Anticipated loss of other revenues over four years (loss of state & federal funds)

Proposition #1- Educational Programs

Estimated tax rate is \$2.50 per \$1,000 of assessed value annually.

Same rate approved by voters in 2018.

UPSD historically “rolls back” some voter approved funds. The full, voter approved amount is rarely collected, but additional budget authority protects the district’s budget from unexpected changes.

Year	Voter Approved Collection
2023	\$ 15,378,000
2024	\$ 16,532,000
2025	\$ 17,524,000
2026	\$ 18,313,000

#6 - The Safety, Technology and Capital Improvements Levy (Proposition 2) funds technology and helps repair, renovate and modernize facilities.



Projects include improvements to HVAC systems, safety, electrical and plumbing systems, repairs to roofs, floors, grounds, fields and outdoor facilities.



Also funds upgrades to technology infrastructure, student computers and instructional technology.

Determining Levy Amounts for Prop #2

Goal: Maintain/improve facilities & technology for student learning and safety; protect community assets

Key Factors:

- Technology Updates & Needs
- Planned repairs and replacements
- Unanticipated repairs and replacements
- Improvements (i.e., Chemistry Labs, Fields, etc.)

Proposition #2- Safety, Tech & Capital Levy

Estimated tax rate is \$0.50 per \$1,000 of assessed value.

Same rate approved by voters in 2018.

Year	Voter Approved Collection
2023	\$ 2,689,000
2024	\$ 2,891,000
2025	\$ 3,065,000
2026	\$ 3,203,000

Past projects funded by the expiring levy include:

Replaced **HVAC system** at Narrows View Intermediate

Purchased **Chromebooks** for students as the district moves towards a 1:1 learning environment

Upgraded internal and external **security cameras** throughout the district

Upgraded **access controls** to limit entry at all schools

Remodeled and modernized **two chemistry classrooms** at Curtis High School

Repaired **sky bridges** at Curtis High School

Repaired **elevator** at Curtis High School

Future Prop #2 funded projects* include:

Replace **HVAC system** at Evergreen Primary and CHS Building 100 & 400

Flat roof repairs at CJH and other sites

Replace **fire panel** at CHS 100 Building

Replace **boilers** at Aquatic Center

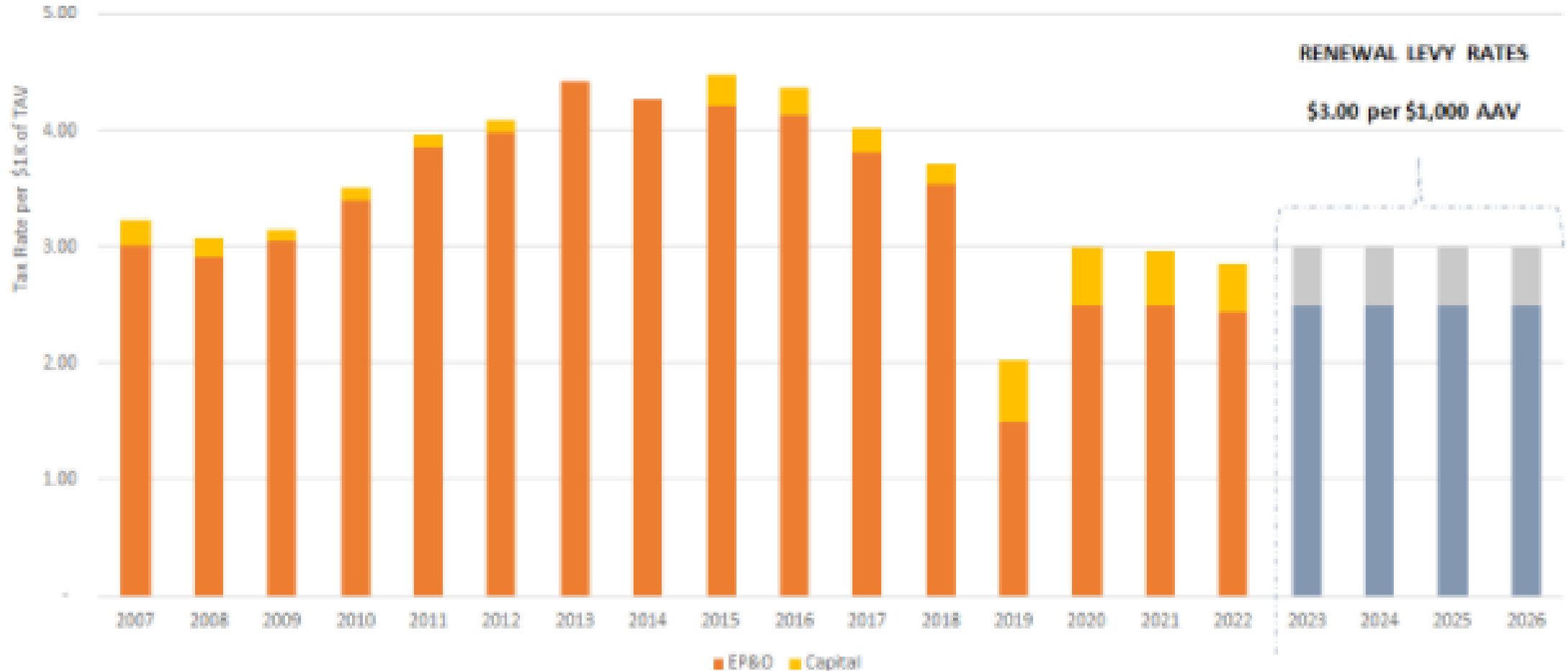
Replace **teacher computers & presentation systems** in all classrooms

Upgrade **network infrastructure** for technology use (dark fiber installation)

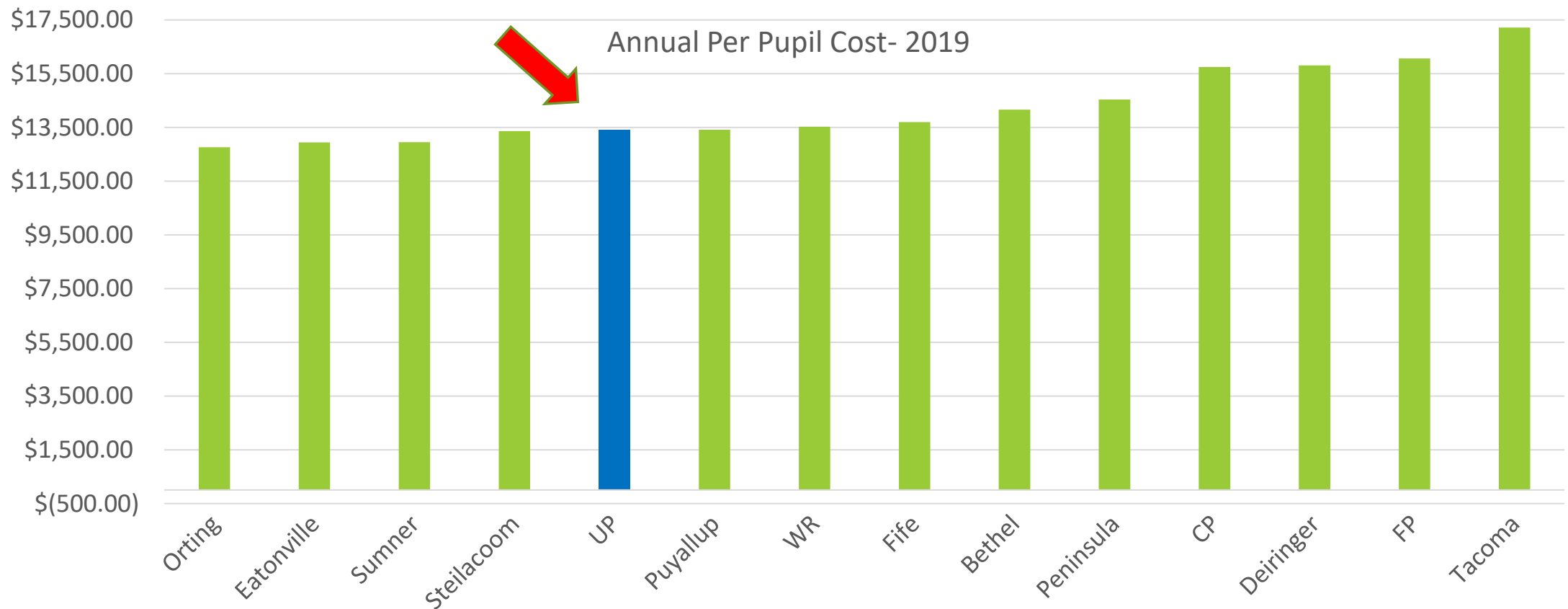
Install **field turf** at CJH and other field & grounds improvements

*All projects costing more than \$75,000 must be pre-approved by the Board of Directors.

#7 – Combined tax rates are the same as those approved by voters in 2018- *\$3.00/\$1000 TAV.*



#8 – Per-student expenditures are lower than most Pierce County districts.



#9 –School levy collections are limited in 3 ways

Districts limited to the *LESSER* of . . .

Limits set in law:

\$2.50/\$1,000 rate *or*

\$2,741* per student

Limits set by voters:

“Amount” noted on ballots.

**Increases annually with inflation*

PROPOSITION NO. 1

UNIVERSITY PLACE SCHOOL DISTRICT REPLACEMENT EDUCATIONAL PROGRAMS AND OPERATIONS LEVY

The Board of Directors of University Place School District passed Resolution #840-11-10-21 concerning replacement of an expiring levy for educational programs and operations. If approved, this proposition would replace an expiring levy to fund programs and operations not funded by the state’s basic education funding, including teachers, nurses, counselors, safety personnel, athletics, music, instructional materials, and student support. It would authorize the District to levy excess taxes on all taxable property within the District, as follows:

Collection Year	Estimated Levy Rate/\$1,000 Assessed Value	Amount
2023	\$2.50	\$15,378,000
2024	\$2.50	\$16,532,000
2025	\$2.50	\$17,524,000
2026	\$2.50	\$18,313,000

UPSD Total Assessed Value- 2022


5,426,000,000

A rate of \$2.50 per \$1,000 = \$13,281,000

\$2,741 per student (5,590) = \$15,322,000

Voter-approved for 2022 = **\$13,258,000**

Levy Collection Limit
for 2022- Lesser of
three options.



#10 - Voters may submit absentee ballots on or before **February 8, 2022.**

Ballots will be mailed to all registered voters in late January.

Voter registration materials are available online at:

<https://www.piercecountywa.gov/6572/Register-to-Vote>





QUESTIONS??



Need more
information?

www.upsd83.org

2022 Dialog

Call us @ 566-5600